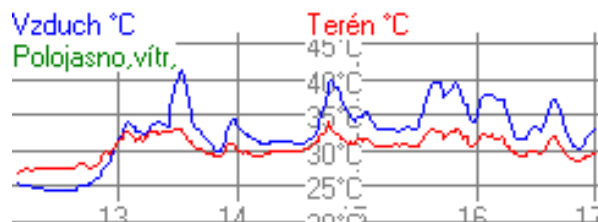




SMS MČR

Příbram

402.5m



9. srpna 2014

Oficiální výsledky

Počátek 14:27:35

I.kat. benzin do 1400 ccm

Konec 16:55:25

Poř.	Stč	Jméno	obsah	stroj	Čas	Ztráta
	1. pokus	2. pokus	3. pokus	4. pokus	5. pokus	
1.	44	DREXLER Tomáš		Škoda Favorit	15.390	
	15.900 (1)	15.538 (1)	15.956 (1)	15.417 (1)	15.390 (1)	
	131.025 (2)	137.471 (2)	137.665 (1)	138.206 (1)	138.787 (1)	[km/h]
2.	440	PUNKERKA 89		Honda	16.424	1.034
	16.800 (3)	16.957 (3)	16.424 (2)	16.912 (3)	16.443 (2)	
	122.166 (4)	120.449 (4)	135.344 (2)	132.108 (3)	134.682 (2)	[km/h]
3.	439	GOLFI		Honda Civic	16.642	1.252
	16.748 (2)	16.724 (2)	16.771 (3)	16.877 (2)	16.642 (3)	
	132.830 (1)	0.000 (0)	132.048 (3)	132.130 (2)	133.126 (3)	[km/h]
4.	265	LAFY		Honda Civic	17.052	1.662
	17.080 (4)	17.299 (4)	17.191 (4)	17.052 (4)	0.000 (0)	
	0.000 (0)	124.042 (3)	124.208 (4)	125.001 (4)	0.000 (0)	[km/h]
5.	284	JELÍNEK Jaroslav		Mitsubishi Colt 1300	17.402	2.012
	17.663 (6)	17.536 (6)	17.530 (5)	17.402 (5)	17.454 (4)	
	0.000 (0)	190.680 (1)	123.485 (5)	123.963 (5)	122.947 (4)	[km/h]
6.	420	SHELDON		Honda Civic	17.429	2.039
	17.429 (5)	17.502 (5)	17.566 (6)	17.516 (6)	0.000 (0)	
	124.048 (3)	0.000 (0)	123.287 (6)	122.809 (6)	0.000 (0)	[km/h]
7.	492	DAVEE		Honda	18.022	2.632
	18.022 (7)	0.000 (0)	0.000 (0)	0.000 (0)	0.000 (0)	
	120.908 (5)	0.000 (0)	0.000 (0)	0.000 (0)	0.000 (0)	[km/h]

Přihlášeno 7

Startovalo 7

Klasifikováno 7

Počátek 15:21:01

I.kat. benzin do 1600 ccm

Konec 16:54:54

Poř.	Stč	Jméno	obsah	stroj	Čas	Ztráta
	1. pokus	2. pokus	3. pokus	4. pokus	5. pokus	
1.	61	MÍŠAN		Honda Civic	14.167	
	14.339 (1)	14.285 (1)	14.167 (1)	14.214 (1)	14.441 (1)	
	155.842 (1)	155.571 (1)	156.326 (1)	155.839 (1)	155.960 (1)	[km/h]
2.	115	PETKA		Honda CRX	14.613	0.446
	15.089 (2)	14.925 (2)	14.718 (2)	14.675 (2)	14.613 (2)	
	0.000 (0)	148.427 (2)	150.960 (2)	151.220 (2)	152.076 (2)	[km/h]
3.	129	FÍLA		Honda Civic	15.403	1.236
	15.423 (3)	15.485 (3)	15.403 (3)	15.978 (3)	0.000 (0)	
	143.596 (2)	141.419 (3)	143.392 (3)	110.953 (3)	0.000 (0)	[km/h]
4.	125	DRAGON		Škoda Felicia	19.494	5.327
	19.494 (4)	19.534 (4)	0.000 (0)	0.000 (0)	0.000 (0)	
	0.000 (0)	107.877 (4)	0.000 (0)	0.000 (0)	0.000 (0)	[km/h]

Přihlášeno 4

Startovalo 4

Klasifikováno 4

Počátek 16:23:00
Konec 16:51:58

I.kat. benzin do 2000 ccm

Poř.	Stč	Jméno	obsah	stroj	Čas	Ztráta	
	1. pokus	2. pokus	3. pokus	4. pokus	5. pokus		
1.	105 MCLAUDI 15.170(1) 149.128(1)	15.074(1) 0.000(0)	15.199(1) 145.706(1)	2:52.929(9) 69.336(9)	Peugeot ZC5 GTI 15.499(2) 145.759(1)	15.074	
2.	96 PARY 15.259(2) 143.974(2)	15.386(2) 0.000(0)	15.227(2) 144.304(2)	15.288(1) 144.376(1)	Nissan Sunny 15.316(1) 143.692(2)	15.227	0.153
3.	112 VLASTIMIL Bůžek 15.990(3) 0.000(0)	15.988(3) 139.229(1)	15.709(3) 139.808(3)	15.788(2) 140.527(2)	Opel Vectra 19.324(7) 80.360(7)	15.709	0.635
4.	111 ČÍZEK Pavel 16.416(5) 0.000(0)	16.395(4) 0.000(0)	16.347(4) 136.212(5)	16.275(3) 136.745(4)	Alfa Romeo 147 0.000(0) 0.000(0)	16.275	1.201
5.	434 REPRO 16.366(4) 136.880(3)	16.519(5) 134.749(3)	16.430(5) 135.714(6)	16.416(4) 135.408(5)	Honda Civic 17.108(4) 132.199(4)	16.366	1.292
6.	216 PEDROLUX 17.054(7) 135.548(4)	16.711(6) 135.131(2)	16.998(7) 137.153(4)	16.822(6) 137.112(3)	Citroen Xsara VTS 16.593(3) 139.118(3)	16.593	1.519
7.	443 KRÁČA 16.698(6) 133.230(5)	18.458(9) 0.000(0)	16.994(6) 129.299(7)	16.682(5) 133.876(5)	BMW 0.000(0) 0.000(0)	16.682	1.608
8.	493 DOMINIK 17.895(8) 0.000(0)	18.041(8) 122.204(5)	17.918(8) 121.434(9)	17.885(7) 123.314(7)	Mazda 323F 17.739(5) 122.934(6)	17.739	2.665
9.	423 RADA Jakub 17.991(9) 120.547(6)	17.845(7) 122.406(4)	18.157(9) 122.039(8)	17.995(8) 123.303(8)	Nissan primera 17.767(6) 124.348(5)	17.767	2.693

Přihlášeno 9

Startovalo 9

Klasifikováno 9

Počátek 15:51:55
Konec 16:52:27

I.kat. benzin do 2500 ccm

Poř.	Stč	Jméno	obsah	stroj	Čas	Ztráta	
	1. pokus	2. pokus	3. pokus	4. pokus	5. pokus		
1.	225 HARRY 15.321(1) 147.126(1)	15.662(1) 0.000(0)	15.718(1) 143.949(1)	15.792(1) 144.972(1)	BMW 323Ti 0.000(0) 0.000(0)	15.321	
2.	433 BLUR 15.899(2) 138.929(2)	16.093(2) 0.000(0)	15.943(2) 137.936(2)	0.000(0) 0.000(0)	Honda 0.000(0) 0.000(0)	15.899	0.578
3.	98 OPEČKO Jiří 15.945(3) 138.230(3)	16.113(3) 0.000(0)	16.117(3) 136.827(3)	0.000(0) 0.000(0)	Ford Probe 0.000(0) 0.000(0)	15.945	0.624
4.	444 DISEASE 16.479(4) 136.053(4)	16.555(4) 135.379(1)	16.651(4) 134.981(4)	17.099(2) 134.812(2)	Ford Probe 17.072(1) 131.752(1)	16.479	1.158
5.	441 EFFKO 17.081(5) 0.000(0)	17.038(5) 0.000(0)	17.176(5) 126.373(5)	0.000(0) 0.000(0)	VW Golf 0.000(0) 0.000(0)	17.038	1.717

Přihlášeno 5

Startovalo 5

Klasifikováno 5

Počátek 15:24:21

I.kat. benzin do 3000 ccm

Konec 16:52:27

Poř.	Stč	Jméno	obsah		stroj	Čas	Ztráta
	1. pokus	2. pokus	3. pokus	4. pokus	5. pokus		
1.	114	JAN Horák			Opel Kadet	13.388	
	13.388(1)	13.471(1)	0.000(0)	0.000(0)	0.000(0)		
	0.000(0)	171.397(1)	0.000(0)	0.000(0)	0.000(0)	[km/h]	
2.	85	PRCEK			BMW M3	13.784	0.396
	13.784(2)	13.809(2)	0.000(0)	0.000(0)	0.000(0)		
	164.411(1)	0.000(0)	0.000(0)	0.000(0)	0.000(0)	[km/h]	
3.	286	MELOUNEK			Opel Monza	16.978	3.590
	17.162(3)	16.978(3)	17.097(1)	17.039(1)	17.182(1)		
	0.000(0)	0.000(0)	126.852(1)	122.209(1)	121.577(1)	[km/h]	

Přihlášeno 3

Startovalo 3

Klasifikováno 3

Počátek 14:41:44

I.kat. benzin do 3500 ccm

Konec 16:51:33

Poř.	Stč	Jméno	obsah		stroj	Čas	Ztráta
	1. pokus	2. pokus	3. pokus	4. pokus	5. pokus		
1.	47	FILOUS Libor			Fiat Coupe	12.740	
	17.812(9)	12.740(1)	0.000(0)	0.000(0)	0.000(0)		
	73.107(7)	167.998(4)	0.000(0)	0.000(0)	0.000(0)	[km/h]	
2.	487	LUKAS			Audi TTS	12.764	0.024
	12.764(1)	12.975(2)	0.000(0)	0.000(0)	0.000(0)		
	177.863(2)	176.511(2)	0.000(0)	0.000(0)	0.000(0)	[km/h]	
3.	374	KUBRA			Mitshubishi Evo X	12.877	0.137
	12.972(3)	12.997(3)	12.910(1)	12.883(1)	12.877(1)		
	173.002(3)	171.690(3)	173.692(2)	174.566(2)	173.297(1)	[km/h]	
4.	99	MILOUŠ			Ford Sierra Cosworth	12.895	0.155
	12.895(2)	13.280(4)	13.658(2)	13.059(2)	16.535(6)		
	191.941(1)	191.458(1)	181.808(1)	191.176(1)	92.968(6)	[km/h]	
5.	488	CVACH Tomáš			Fiat Coupe	13.909	1.169
	14.428(5)	14.098(5)	14.098(3)	13.909(3)	14.009(2)		
	0.000(0)	0.000(0)	165.692(3)	167.379(3)	166.180(2)	[km/h]	
6.	491	MVOLESKO			Seat Leon Cupra	14.095	1.355
	14.095(4)	0.000(0)	0.000(0)	0.000(0)	0.000(0)		
	0.000(0)	0.000(0)	0.000(0)	0.000(0)	0.000(0)	[km/h]	
7.	259	MĚSÍC			VW Golf V GTi	14.835	2.095
	15.202(6)	14.971(6)	15.050(4)	14.835(4)	14.849(3)		
	149.493(4)	149.786(5)	147.924(4)	151.016(4)	151.211(3)	[km/h]	
8.	421	STRAČENA			Škoda Octavia	15.709	2.969
	15.826(7)	15.842(7)	16.195(5)	16.232(6)	15.709(4)		
	147.880(5)	0.000(0)	145.436(5)	137.911(6)	144.867(4)	[km/h]	
9.	435	KUBA			Opel Zafira	16.135	3.395
	16.379(8)	16.264(8)	16.242(6)	16.213(5)	16.135(5)		
	133.758(6)	0.000(0)	135.581(6)	139.293(5)	137.677(5)	[km/h]	

Přihlášeno 9

Startovalo 9

Klasifikováno 9

Počátek 16:51:41**I.kat. benzin do 4000 ccm****Konec 16:51:56**

Poř.	Stč	Jméno	obsah	stroj	Čas	Ztráta
	1. pokus	2. pokus	3. pokus	4. pokus	5. pokus	
1.	217	MATOUŠ Jindřich St.			Saab Aero	15.352
	15.631(1)	15.352(1)	15.999(1)	15.934(1)	16.215(1)	
	147.391(1)	0.000(0)	142.987(1)	142.765(1)	143.794(1)	[km/h]

Přihlášeno 1

Startovalo 1

Klasifikováno 1

Počátek 16:03:33**I.kat. benzin nad 4000 ccm****Konec 16:52:52**

Poř.	Stč	Jméno	obsah	stroj	Čas	Ztráta	
	1. pokus	2. pokus	3. pokus	4. pokus	5. pokus		
1.	8	VLASTÍK			Nissan GT-R	11.095	
	11.095(1)	11.416(1)	11.222(1)	11.097(1)	0.000(0)		
	0.000(0)	0.000(0)	195.899(1)	198.864(1)	0.000(0)	[km/h]	
2.	448	ZED			Nissan GTR	11.867	0.772
	11.949(2)	11.967(2)	12.093(2)	11.867(2)	12.045(1)		
	197.047(1)	0.000(0)	195.349(2)	198.379(2)	196.418(1)	[km/h]	
3.	417	KŘÍŽ Dan			Mercedes Benz CLK	12.226	1.131
	12.289(3)	12.589(3)	21.671(6)	12.277(3)	12.226(2)		
	192.038(2)	0.000(0)	74.846(6)	190.204(3)	189.740(2)	[km/h]	
4.	480	PÁŘA			BMW 335iX	13.064	1.969
	13.089(4)	13.767(4)	13.064(3)	14.335(5)	0.000(0)		
	0.000(0)	0.000(0)	173.387(3)	131.115(5)	0.000(0)	[km/h]	
5.	10	TOM			BMW X6	13.946	2.851
	13.946(5)	14.000(5)	14.028(4)	0.000(0)	0.000(0)		
	0.000(0)	164.539(2)	164.714(5)	0.000(0)	0.000(0)	[km/h]	
6.	437	PAJ			Chevrolet Camaro	13.954	2.859
	14.043(6)	14.066(6)	14.142(5)	14.278(4)	13.954(3)		
	164.494(3)	166.643(1)	165.304(4)	163.826(4)	165.681(3)	[km/h]	

Přihlášeno 6

Startovalo 6

Klasifikováno 6

Počátek 15:47:08**I.kat. diesel do 2000 ccm****Konec 16:49:15**

Poř.	Stč	Jméno	obsah	stroj	Čas	Ztráta	
	1. pokus	2. pokus	3. pokus	4. pokus	5. pokus		
1.	342	HONZA Chipforum			Seat Leon 4	13.173	
	13.173(1)	13.755(3)	13.225(1)	0.000(0)	0.000(0)		
	166.362(1)	163.074(2)	165.300(2)	0.000(0)	0.000(0)	[km/h]	
2.	245	JOHNY			Seat Ibiza	13.314	0.141
	14.470(3)	13.538(2)	13.528(3)	13.314(1)	0.000(0)		
	0.000(0)	317.740(1)	171.940(1)	173.724(1)	0.000(0)	[km/h]	
3.	37	DÁDA			Leon Cupra	13.421	0.248
	13.497(2)	13.422(1)	13.489(2)	13.421(2)	0.000(0)		
	160.381(3)	0.000(0)	159.788(3)	160.834(2)	0.000(0)	[km/h]	
4.	271	KOUHY			Škoda Octavia TDi	14.490	1.317
	14.654(4)	14.801(4)	14.490(4)	0.000(0)	0.000(0)		
	160.427(2)	158.667(3)	149.529(4)	0.000(0)	0.000(0)	[km/h]	
5.	489	OTA A3			Audi A3	14.770	1.597
	15.229(6)	14.858(5)	14.770(5)	0.000(0)	0.000(0)		
	151.644(4)	0.000(0)	148.752(5)	0.000(0)	0.000(0)	[km/h]	
6.	424	VORY			Seat Ibiza	15.136	1.963
	15.136(5)	15.212(6)	15.144(6)	0.000(0)	0.000(0)		
	0.000(0)	0.000(0)	148.296(6)	0.000(0)	0.000(0)	[km/h]	
7.	436	VONDRI			VW Golf TDi GTi	15.579	2.406
	15.579(7)	15.632(7)	15.668(7)	15.784(3)	0.000(0)		
	145.760(5)	144.926(4)	144.087(7)	144.330(3)	0.000(0)	[km/h]	

Poř.	Stč	Jméno	obsah	stroj	Čas	Ztráta	
	1. pokus	2. pokus	3. pokus	4. pokus	5. pokus		
8.	425 VINL				Peugeot 205	16.470	3.297
	16.528(8)	16.483(8)	16.575(8)	16.470(4)	16.642(1)		
	132.921(6)	130.916(5)	130.535(8)	130.315(4)	128.128(1)	[km/h]	

Přihlášeno 8
 Startovalo 8
 Klasifikováno 8

Počátek 16:23:28 I.kat. diesel do 2500 ccm
Konec 16:48:50

Poř.	Stč	Jméno	obsah	stroj	Čas	Ztráta	
	1. pokus	2. pokus	3. pokus	4. pokus	5. pokus		
1.	82 RADEK 156				Alfa Romeo 156	14.105	
	14.105(1)	14.135(1)	14.105(1)	14.105(1)	14.228(1)		
	166.245(1)	164.833(1)	164.259(1)	164.961(1)	165.465(1)	[km/h]	
2.	254 PELEŠKA Zdeněk				BMW 325 TDS	15.812	1.707
	16.184(2)	15.864(2)	15.819(2)	15.812(2)	15.960(2)		
	138.524(2)	139.190(2)	139.837(2)	140.152(2)	139.047(2)	[km/h]	
3.	203 MEFISTO				Alfa Romeo	16.161	2.056
	16.331(3)	16.257(3)	16.816(3)	16.161(3)	0.000(0)		
	136.237(3)	136.092(3)	135.455(3)	136.522(3)	0.000(0)	[km/h]	

Přihlášeno 3
 Startovalo 3
 Klasifikováno 3

Počátek 15:15:47 I.kat. diesel do 3000 ccm
Konec 16:50:43

Poř.	Stč	Jméno	obsah	stroj	Čas	Ztráta	
	1. pokus	2. pokus	3. pokus	4. pokus	5. pokus		
1.	138 DANDY				Audi A5	13.420	
	13.420(1)	13.563(1)	0.000(0)	0.000(0)	0.000(0)		
	166.063(1)	164.377(1)	0.000(0)	0.000(0)	0.000(0)	[km/h]	
2.	34 INDI				Audi A4 TDi Q	13.672	0.252
	13.672(2)	13.739(2)	0.000(0)	0.000(0)	0.000(0)		
	0.000(0)	161.016(3)	0.000(0)	0.000(0)	0.000(0)	[km/h]	
3.	137 LUKYS				BMW 330D	13.731	0.311
	13.806(3)	13.811(3)	13.731(1)	0.000(0)	0.000(0)		
	0.000(0)	0.000(0)	164.235(1)	0.000(0)	0.000(0)	[km/h]	
4.	442 TICTAC				BMW S3Sd	13.812	0.392
	13.941(5)	13.812(4)	14.420(3)	14.133(1)	0.000(0)		
	163.459(2)	162.754(2)	159.112(3)	159.763(1)	0.000(0)	[km/h]	
5.	3 LUĐA 330d				BMW 330D	13.938	0.518
	13.938(4)	14.150(5)	14.281(2)	0.000(0)	0.000(0)		
	161.382(3)	0.000(0)	160.624(2)	0.000(0)	0.000(0)	[km/h]	
6.	431 LUCIE				BMW	15.274	1.854
	16.194(6)	15.536(6)	15.274(4)	15.862(2)	15.966(1)		
	138.945(4)	0.000(0)	146.103(4)	137.478(2)	145.551(1)	[km/h]	

Přihlášeno 6
 Startovalo 6
 Klasifikováno 6

Počátek 15:53:15
Konec 15:56:24

I.kat. Veteráni

Poř.	Stč	Jméno	obsah	stroj	Čas	Ztráta
	1. pokus	2. pokus	3. pokus	4. pokus	5. pokus	
1.	447	TOULOVÁ Václava		VW Brouk		20.487
	20.487(1) 0.000(0)	21.034(1) 0.000(0)	20.648(1) 100.090(1)	0.000(0) 0.000(0)	0.000(0) 0.000(0)	[km/h]
2.	418	VAŠÁK Jaroslav		Škoda 100		24.931 4.444
	26.315(3) 82.938(1)	25.345(2) 82.528(1)	24.931(2) 80.371(2)	0.000(0) 0.000(0)	0.000(0) 0.000(0)	[km/h]
3.	87	LONGER		Trabant 601 Combi		26.226 5.739
	26.226(2) 77.659(2)	26.819(3) 0.000(0)	26.495(3) 76.657(3)	0.000(0) 0.000(0)	0.000(0) 0.000(0)	[km/h]

Přihlášeno 3

Startovalo 3

Klasifikováno 3

Počátek 15:27:17
Konec 16:54:23

II.kat. benzin do 2000 ccm

Poř.	Stč	Jméno	obsah	stroj	Čas	Ztráta
	1. pokus	2. pokus	3. pokus	4. pokus	5. pokus	
1.	26	NIKL Jiří		Citroen BX		13.459
	13.459(1) 0.000(0)	13.459(1) 165.503(1)	0.000(0) 0.000(0)	0.000(0) 0.000(0)	0.000(0) 0.000(0)	[km/h]
2.	131	JARDA Pešan Ml.		Š 110 R		13.721 0.262
	14.160(3) 0.000(0)	14.035(3) 0.000(0)	13.721(1) 159.295(2)	13.835(1) 160.854(2)	14.736(1) 150.147(1)	[km/h]
3.	106	LADRA Štěpán		Citroen AX		13.941 0.482
	14.013(2) 0.000(0)	14.021(2) 161.961(2)	14.115(2) 160.811(1)	13.941(2) 162.805(1)	0.000(0) 0.000(0)	[km/h]
4.	428	DON Pedro		Peugeot 306		14.816 1.357
	15.302(4) 152.030(1)	16.785(4) 0.000(0)	15.408(3) 151.916(3)	14.816(3) 153.367(3)	15.807(3) 134.961(3)	[km/h]
5.	132	JARDA Pešan St.		Š 100		15.339 1.880
	15.339(5) 140.915(2)	18.101(5) 105.817(3)	15.932(4) 141.867(4)	15.587(4) 141.050(4)	15.652(2) 142.114(2)	[km/h]

Přihlášeno 5

Startovalo 5

Klasifikováno 5

Počátek 14:37:11
Konec 16:53:42

II.kat. benzin nad 2000 ccm

Poř.	Stč	Jméno	obsah	stroj	Čas	Ztráta
	1. pokus	2. pokus	3. pokus	4. pokus	5. pokus	
1.	403	BOHUSLÁVEK Václav		Cobra 427		11.375
	11.895(1) 0.000(0)	11.375(1) 0.000(0)	11.423(1) 207.238(1)	11.477(1) 206.804(1)	11.459(1) 206.552(1)	[km/h]
2.	494	WERTHEIM Jan		Cobra 427		12.805 1.430
	12.911(2) 0.000(0)	12.847(2) 0.000(0)	12.910(2) 182.502(2)	12.856(2) 180.047(2)	12.805(2) 180.457(2)	[km/h]
3.	419	KRUML Petr		Cobra 427		13.036 1.661
	13.756(6) 158.800(7)	13.339(4) 169.601(3)	13.036(3) 175.208(4)	13.336(4) 167.393(4)	17.744(8) 73.136(8)	[km/h]
4.	257	TOULA Jiří		Brouk VW		13.145 1.770
	13.532(5) 165.543(3)	13.718(6) 166.268(5)	13.145(4) 163.274(9)	0.000(0) 0.000(0)	0.000(0) 0.000(0)	[km/h]
5.	495	WERTHEIM Erik		AC Cobra		13.168 1.793
	13.168(3) 162.724(5)	13.391(5) 0.000(0)	13.384(6) 167.447(6)	13.306(3) 167.216(5)	13.382(3) 166.836(4)	[km/h]
6.	59	DVOŘÁK Josef		Fiat Coupé		13.224 1.849
	13.325(4) 175.998(1)	13.331(3) 173.106(1)	13.224(5) 177.363(3)	0.000(0) 0.000(0)	0.000(0) 0.000(0)	[km/h]

Poř.	Stč	Jméno	obsah	stroj	Čas	Ztráta	
	1. pokus	2. pokus	3. pokus	4. pokus	5. pokus		
7.	416 GULF				AC Cobra 424	13.577	2.202
	14.078(8)	13.824(7)	13.660(7)	13.829(5)	13.577(4)		
	163.686(4)	168.572(4)	166.801(7)	166.736(6)	166.452(5)	[km/h]	
8.	113 JAN Bartáček				Seat Ibiza	13.907	2.532
	13.928(7)	14.000(8)	13.907(8)	14.084(6)	13.951(5)		
	171.322(2)	171.198(2)	170.709(5)	169.055(3)	170.595(3)	[km/h]	
9.	427 WARHOL				Fiat Coupe 16VT	14.111	2.736
	14.193(9)	14.111(9)	14.523(9)	14.864(8)	15.424(7)		
	159.799(6)	164.334(6)	163.818(8)	163.497(7)	155.950(6)	[km/h]	
10.	43 MPOWER				BMW	14.518	3.143
	14.518(10)	14.908(10)	0.000(0)	0.000(0)	0.000(0)		
	0.000(0)	0.000(0)	0.000(0)	0.000(0)	0.000(0)	[km/h]	
11.	253 ŘÍHA Jan				BMW 328	14.854	3.479
	14.933(11)	15.602(12)	15.402(11)	14.854(7)	15.124(6)		
	151.679(8)	0.000(0)	148.794(10)	149.975(8)	149.719(7)	[km/h]	
12.	117 SOJKY				BMW 325 Ti	14.975	3.600
	14.975(12)	15.207(11)	15.386(10)	15.297(9)	0.000(0)		
	0.000(0)	0.000(0)	142.031(11)	142.334(9)	0.000(0)	[km/h]	
13.	84 AKURAK				Honda Civic	15.459	4.084
	15.459(13)	0.000(0)	0.000(0)	0.000(0)	0.000(0)		
	115.545(9)	0.000(0)	0.000(0)	0.000(0)	0.000(0)	[km/h]	
14.	422 PASTRŇÁK Zbyněk				Cobra	16.826	5.451
	17.101(14)	16.826(13)	0.000(0)	0.000(0)	0.000(0)		
	0.000(0)	0.000(0)	0.000(0)	0.000(0)	0.000(0)	[km/h]	

Přihlášeno 14

Startovalo 14

Klasifikováno 14

Počátek 15:16:14

II.kat. Diesel nad 2000 ccm

Konec 15:16:28

Poř.	Stč	Jméno	obsah	stroj	Čas	Ztráta	
	1. pokus	2. pokus	3. pokus	4. pokus	5. pokus		
1.	35 ALEŠEK 22				VW Golf	14.439	
	14.439(1)	14.951(1)	0.000(0)	0.000(0)	0.000(0)		
	0.000(0)	174.651(1)	0.000(0)	0.000(0)	0.000(0)	[km/h]	

Přihlášeno 1

Startovalo 1

Klasifikováno 1

Počátek 16:45:22

moto - do 600 ccm

Konec 16:55:42

Poř.	Stč	Jméno	obsah	stroj	Čas	Ztráta	
	1. pokus	2. pokus	3. pokus	4. pokus	5. pokus		
1.	432 PODHORSKÝ Bohumil				Yamaha YZF R6	11.252	
	11.852(1)	11.738(1)	11.252(1)	18.406(4)	11.676(1)		
	193.089(1)	190.690(1)	194.311(1)	78.757(4)	189.388(1)	[km/h]	
2.	445 MATY				Suzuki	12.371	1.119
	12.830(3)	12.528(2)	12.371(2)	12.920(3)	13.077(3)		
	176.073(2)	0.000(0)	177.663(2)	176.776(1)	174.806(2)	[km/h]	
3.	490 ČERV				Honda CBR	12.471	1.219
	12.471(2)	12.791(3)	12.568(3)	12.579(1)	12.550(2)		
	170.828(3)	171.334(2)	171.169(3)	169.559(2)	170.158(3)	[km/h]	
4.	446 HAMPI				Suzuki	12.814	1.562
	12.920(4)	12.874(4)	12.814(4)	12.916(2)	13.116(4)		
	0.000(0)	0.000(0)	154.516(4)	151.508(3)	153.511(4)	[km/h]	

Přihlášeno 4

Startovalo 4

Klasifikováno 4

Počátek 15:21:29**moto - do 750 ccm****Konec 15:21:40**

Poř.	Stč	Jméno	obsah		stroj	Čas	Ztráta
	1. pokus	2. pokus	3. pokus	4. pokus	5. pokus		
1.	426 MÁCA				Suzuki GSX-R	10.802	
	10.802(1) 0.000(0)	10.863(1) 0.000(0)	0.000(0) 0.000(0)	0.000(0) 0.000(0)	0.000(0) 0.000(0)	[km/h]	

Přihlášeno 1

Startovalo 1

Klasifikováno 1

Počátek 16:55:31**moto - do 1000 ccm****Konec 16:56:27**

Poř.	Stč	Jméno	obsah		stroj	Čas	Ztráta
	1. pokus	2. pokus	3. pokus	4. pokus	5. pokus		
1.	438 PSYCHO				Suzuki 1000R	10.294	
	10.591(2) 0.000(0)	11.236(2) 0.000(0)	10.740(2) 204.711(2)	10.635(1) 219.405(1)	10.294(1) 222.016(1)	[km/h]	
2.	429 JEŘÁBEK Tomáš				Suzuki GSX-R 1000	10.591	0.297
	10.591(1) 0.000(0)	11.533(3) 213.042(1)	10.667(1) 219.833(1)	10.752(2) 217.644(2)	10.592(2) 216.375(2)	[km/h]	
3.	346 MIREC				Honda CBR Fireblade	10.991	0.697
	10.991(3) 204.760(1)	11.094(1) 202.108(2)	11.025(3) 203.329(3)	11.156(3) 192.212(3)	11.187(3) 203.706(3)	[km/h]	

Přihlášeno 3

Startovalo 3

Klasifikováno 3

Počátek 15:21:30**moto - nad 1000 ccm****Konec 16:04:35**

Poř.	Stč	Jméno	obsah		stroj	Čas	Ztráta
	1. pokus	2. pokus	3. pokus	4. pokus	5. pokus		
1.	430 ČEŠKA Oldřich				Suzuki Hayabusa	10.359	
	10.478(1) 0.000(0)	10.406(1) 217.381(1)	10.359(1) 215.743(1)	0.000(0) 0.000(0)	0.000(0) 0.000(0)	[km/h]	
2.	486 ŘEHOŘ Milan				Suzuki Intruder	14.492	4.133
	14.492(2) 141.556(1)	14.719(2) 138.625(2)	0.000(0) 0.000(0)	0.000(0) 0.000(0)	0.000(0) 0.000(0)	[km/h]	

Přihlášeno 2

Startovalo 2

Klasifikováno 2

Počátek 0**Kategorie I - cestovní vozy****Konec 0**

Poř.	Stč	Jméno	obsah		stroj	Čas	Ztráta
	1. pokus	2. pokus	3. pokus	4. pokus	5. pokus		
1.	8 VLASTÍK				Nissan GT-R	11.095	
	11.095(1) 0.000(0)	11.416(1) 0.000(0)	11.222(1) 195.899(1)	11.097(1) 198.864(1)	0.000(0) 0.000(0)	[km/h]	
2.	448 ZED				Nissan GTR	11.867	0.772
	11.949(2) 197.047(1)	11.967(2) 0.000(0)	12.093(2) 195.349(2)	11.867(2) 198.379(2)	12.045(1) 196.418(1)	[km/h]	
3.	417 KRÍŽ Dan				Mercedes Benz CLK	12.226	1.131
	12.289(3) 192.038(2)	12.589(3) 0.000(0)	21.671(6) 74.846(6)	12.277(3) 190.204(3)	12.226(2) 189.740(2)	[km/h]	
4.	47 FILOUS Libor				Fiat Coupe	12.740	1.645
	17.812(9) 73.107(7)	12.740(1) 167.998(4)	0.000(0) 0.000(0)	0.000(0) 0.000(0)	0.000(0) 0.000(0)	[km/h]	

Poř.	Stč	Jméno	obsah	stroj	Čas	Ztráta	
	1. pokus	2. pokus	3. pokus	4. pokus	5. pokus		
5.	487 LUKAS				Audi TTS	12.764	1.669
	12.764(1)	12.975(2)	0.000(0)	0.000(0)	0.000(0)		
	177.863(2)	176.511(2)	0.000(0)	0.000(0)	0.000(0)	[km/h]	
6.	374 KUBRA				Mitshubishi Evo X	12.877	1.782
	12.972(3)	12.997(3)	12.910(1)	12.883(1)	12.877(1)		
	173.002(3)	171.690(3)	173.692(2)	174.566(2)	173.297(1)	[km/h]	
7.	99 MILOUŠ				Ford Sierra Cosworth	12.895	1.800
	12.895(2)	13.280(4)	13.658(2)	13.059(2)	16.535(6)		
	191.941(1)	191.458(1)	181.808(1)	191.176(1)	92.968(6)	[km/h]	
8.	480 PÁRA				BMW 335iX	13.064	1.969
	13.089(4)	13.767(4)	13.064(3)	14.335(5)	0.000(0)		
	0.000(0)	0.000(0)	173.387(3)	131.115(5)	0.000(0)	[km/h]	
9.	342 HONZA Chipforum				Seat Leon 4	13.173	2.078
	13.173(1)	13.755(3)	13.225(1)	0.000(0)	0.000(0)		
	166.362(1)	163.074(2)	165.300(2)	0.000(0)	0.000(0)	[km/h]	
10.	245 JOHNY				Seat Ibiza	13.314	2.219
	14.470(3)	13.538(2)	13.528(3)	13.314(1)	0.000(0)		
	0.000(0)	317.740(1)	171.940(1)	173.724(1)	0.000(0)	[km/h]	
11.	114 JAN Horák				Opel Kadet	13.388	2.293
	13.388(1)	13.471(1)	0.000(0)	0.000(0)	0.000(0)		
	0.000(0)	171.397(1)	0.000(0)	0.000(0)	0.000(0)	[km/h]	
12.	138 DANDY				Audi A5	13.420	2.325
	13.420(1)	13.563(1)	0.000(0)	0.000(0)	0.000(0)		
	166.063(1)	164.377(1)	0.000(0)	0.000(0)	0.000(0)	[km/h]	
13.	37 DÁDA				Leon Cupra	13.421	2.326
	13.497(2)	13.422(1)	13.489(2)	13.421(2)	0.000(0)		
	160.381(3)	0.000(0)	159.788(3)	160.834(2)	0.000(0)	[km/h]	
14.	34 INDI				Audi A4 TDi Q	13.672	2.577
	13.672(2)	13.739(2)	0.000(0)	0.000(0)	0.000(0)		
	0.000(0)	161.016(3)	0.000(0)	0.000(0)	0.000(0)	[km/h]	
15.	137 LUKYS				BMW 330D	13.731	2.636
	13.806(3)	13.811(3)	13.731(1)	0.000(0)	0.000(0)		
	0.000(0)	0.000(0)	164.235(1)	0.000(0)	0.000(0)	[km/h]	
16.	85 PRCEK				BMW M3	13.784	2.689
	13.784(2)	13.809(2)	0.000(0)	0.000(0)	0.000(0)		
	164.411(1)	0.000(0)	0.000(0)	0.000(0)	0.000(0)	[km/h]	
17.	442 TICTAC				BMW S3Sd	13.812	2.717
	13.941(5)	13.812(4)	14.420(3)	14.133(1)	0.000(0)		
	163.459(2)	162.754(2)	159.112(3)	159.763(1)	0.000(0)	[km/h]	
18.	488 CVACH Tomáš				Fiat Coupe	13.909	2.814
	14.428(5)	14.098(5)	14.098(3)	13.909(3)	14.009(2)		
	0.000(0)	0.000(0)	165.692(3)	167.379(3)	166.180(2)	[km/h]	
19.	3 LUĐA 330d				BMW 330D	13.938	2.843
	13.938(4)	14.150(5)	14.281(2)	0.000(0)	0.000(0)		
	161.382(3)	0.000(0)	160.624(2)	0.000(0)	0.000(0)	[km/h]	
20.	10 TOM				BMW X6	13.946	2.851
	13.946(5)	14.000(5)	14.028(4)	0.000(0)	0.000(0)		
	0.000(0)	164.539(2)	164.714(5)	0.000(0)	0.000(0)	[km/h]	
21.	437 PAJ				Chevrolet Camaro	13.954	2.859
	14.043(6)	14.066(6)	14.142(5)	14.278(4)	13.954(3)		
	164.494(3)	166.643(1)	165.304(4)	163.826(4)	165.681(3)	[km/h]	
22.	491 MVOLESKO				Seat Leon Cupra	14.095	3.000
	14.095(4)	0.000(0)	0.000(0)	0.000(0)	0.000(0)		
	0.000(0)	0.000(0)	0.000(0)	0.000(0)	0.000(0)	[km/h]	
23.	82 RADEK 156				Alfa Romeo 156	14.105	3.010
	14.105(1)	14.135(1)	14.105(1)	14.105(1)	14.228(1)		
	166.245(1)	164.833(1)	164.259(1)	164.961(1)	165.465(1)	[km/h]	
24.	61 MÍŠAN				Honda Civic	14.167	3.072
	14.339(1)	14.285(1)	14.167(1)	14.214(1)	14.441(1)		
	155.842(1)	155.571(1)	156.326(1)	155.839(1)	155.960(1)	[km/h]	
25.	271 KOUHY				Škoda Octavia TDi	14.490	3.395
	14.654(4)	14.801(4)	14.490(4)	0.000(0)	0.000(0)		
	160.427(2)	158.667(3)	149.529(4)	0.000(0)	0.000(0)	[km/h]	
26.	115 PETKA				Honda CRX	14.613	3.518
	15.089(2)	14.925(2)	14.718(2)	14.675(2)	14.613(2)		
	0.000(0)	148.427(2)	150.960(2)	151.220(2)	152.076(2)	[km/h]	
27.	489 OTA A3				Audi A3	14.770	3.675
	15.229(6)	14.858(5)	14.770(5)	0.000(0)	0.000(0)		
	151.644(4)	0.000(0)	148.752(5)	0.000(0)	0.000(0)	[km/h]	
28.	259 MĚSÍC				VW Golf V GTi	14.835	3.740
	15.202(6)	14.971(6)	15.050(4)	14.835(4)	14.849(3)		
	149.493(4)	149.786(5)	147.924(4)	151.016(4)	151.211(3)	[km/h]	

Poř.	Stč	Jméno	obsah	stroj	Čas	Ztráta	
	1. pokus	2. pokus	3. pokus	4. pokus	5. pokus		
29.	105	MCLAUDI			Peugeot ZC5 GTI	15.074	3.979
	15.170(1)	15.074(1)	15.199(1)	2:52.929(9)	15.499(2)		
	149.128(1)	0.000(0)	145.706(1)	69.336(9)	145.759(1)	[km/h]	
30.	424	VORY			Seat Ibiza	15.136	4.041
	15.136(5)	15.212(6)	15.144(6)	0.000(0)	0.000(0)		
	0.000(0)	0.000(0)	148.296(6)	0.000(0)	0.000(0)	[km/h]	
31.	96	PARY			Nissan Sunny	15.227	4.132
	15.259(2)	15.386(2)	15.227(2)	15.288(1)	15.316(1)		
	143.974(2)	0.000(0)	144.304(2)	144.376(1)	143.692(2)	[km/h]	
32.	431	LUCIE			BMW	15.274	4.179
	16.194(6)	15.536(6)	15.274(4)	15.862(2)	15.966(1)		
	138.945(4)	0.000(0)	146.103(4)	137.478(2)	145.551(1)	[km/h]	
33.	225	HARRY			BMW 323Ti	15.321	4.226
	15.321(1)	15.662(1)	15.718(1)	15.792(1)	0.000(0)		
	147.126(1)	0.000(0)	143.949(1)	144.972(1)	0.000(0)	[km/h]	
34.	217	MATOUŠ Jindřich St.			Saab Aero	15.352	4.257
	15.631(1)	15.352(1)	15.999(1)	15.934(1)	16.215(1)		
	147.391(1)	0.000(0)	142.987(1)	142.765(1)	143.794(1)	[km/h]	
35.	44	DREXLER Tomáš			Škoda Favorit	15.390	4.295
	15.900(1)	15.538(1)	15.956(1)	15.417(1)	15.390(1)		
	131.025(2)	137.471(2)	137.665(1)	138.206(1)	138.787(1)	[km/h]	
36.	129	FÍLA			Honda Civic	15.403	4.308
	15.423(3)	15.485(3)	15.403(3)	15.978(3)	0.000(0)		
	143.596(2)	141.419(3)	143.392(3)	110.953(3)	0.000(0)	[km/h]	
37.	436	VONDRI			VW Golf TDi GTi	15.579	4.484
	15.579(7)	15.632(7)	15.668(7)	15.784(3)	0.000(0)		
	145.760(5)	144.926(4)	144.087(7)	144.330(3)	0.000(0)	[km/h]	
38.	112	VLASTIMIL Bůžek			Opel Vectra	15.709	4.614
	15.990(3)	15.988(3)	15.709(3)	15.788(2)	19.324(7)		
	0.000(0)	139.229(1)	139.808(3)	140.527(2)	80.360(7)	[km/h]	
	421	STRAČENA			Škoda Octavia	15.709	4.614
	15.826(7)	15.842(7)	16.195(5)	16.232(6)	15.709(4)		
	147.880(5)	0.000(0)	145.436(5)	137.911(6)	144.867(4)	[km/h]	
40.	254	PELEŠKA Zdeněk			BMW 325 TDS	15.812	4.717
	16.184(2)	15.864(2)	15.819(2)	15.812(2)	15.960(2)		
	138.524(2)	139.190(2)	139.837(2)	140.152(2)	139.047(2)	[km/h]	
41.	433	BLUR			Honda	15.899	4.804
	15.899(2)	16.093(2)	15.943(2)	0.000(0)	0.000(0)		
	138.929(2)	0.000(0)	137.936(2)	0.000(0)	0.000(0)	[km/h]	
42.	98	OPEČKO Jiří			Ford Probe	15.945	4.850
	15.945(3)	16.113(3)	16.117(3)	0.000(0)	0.000(0)		
	138.230(3)	0.000(0)	136.827(3)	0.000(0)	0.000(0)	[km/h]	
43.	435	KUBA			Opel Zafira	16.135	5.040
	16.379(8)	16.264(8)	16.242(6)	16.213(5)	16.135(5)		
	133.758(6)	0.000(0)	135.581(6)	139.293(5)	137.677(5)	[km/h]	
44.	203	MEFISTO			Alfa Romeo	16.161	5.066
	16.331(3)	16.257(3)	16.816(3)	16.161(3)	0.000(0)		
	136.237(3)	136.092(3)	135.455(3)	136.522(3)	0.000(0)	[km/h]	
45.	111	ČÍZEK Pavel			Alfa Romeo 147	16.275	5.180
	16.416(5)	16.395(4)	16.347(4)	16.275(3)	0.000(0)		
	0.000(0)	0.000(0)	136.212(5)	136.745(4)	0.000(0)	[km/h]	
46.	434	REPRO			Honda Civic	16.366	5.271
	16.366(4)	16.519(5)	16.430(5)	16.416(4)	17.108(4)		
	136.880(3)	134.749(3)	135.714(6)	135.408(5)	132.199(4)	[km/h]	
47.	440	PUNKERKA 89			Honda	16.424	5.329
	16.800(3)	16.957(3)	16.424(2)	16.912(3)	16.443(2)		
	122.166(4)	120.449(4)	135.344(2)	132.108(3)	134.682(2)	[km/h]	
48.	425	VINL			Peugeot 205	16.470	5.375
	16.528(8)	16.483(8)	16.575(8)	16.470(4)	16.642(1)		
	132.921(6)	130.916(5)	130.535(8)	130.315(4)	128.128(1)	[km/h]	
49.	444	DISEASE			Ford Probe	16.479	5.384
	16.479(4)	16.555(4)	16.651(4)	17.099(2)	17.072(1)		
	136.053(4)	135.379(1)	134.981(4)	134.812(2)	131.752(1)	[km/h]	
50.	216	PEDROLUX			Citroen Xsara VTS	16.593	5.498
	17.054(7)	16.711(6)	16.998(7)	16.822(6)	16.593(3)		
	135.548(4)	135.131(2)	137.153(4)	137.112(3)	139.118(3)	[km/h]	
51.	439	GOLFI			Honda Civic	16.642	5.547
	16.748(2)	16.724(2)	16.771(3)	16.877(2)	16.642(3)		
	132.830(1)	0.000(0)	132.048(3)	132.130(2)	133.126(3)	[km/h]	
52.	443	KRÁČA			BMW	16.682	5.587
	16.698(6)	18.458(9)	16.994(6)	16.682(5)	0.000(0)		
	133.230(5)	0.000(0)	129.299(7)	133.876(6)	0.000(0)	[km/h]	

Poř.	Stč	Jméno	obsah	stroj	Čas	Ztráta
	1. pokus	2. pokus	3. pokus	4. pokus	5. pokus	
53.	286	MELOUNEK		Opel Monza	16.978	5.883
	17.162(3)	16.978(3)	17.097(1)	17.039(1)	17.182(1)	[km/h]
	0.000(0)	0.000(0)	126.852(1)	122.209(1)	121.577(1)	
54.	441	EFFKO		VW Golf	17.038	5.943
	17.081(5)	17.038(5)	17.176(5)	0.000(0)	0.000(0)	[km/h]
	0.000(0)	0.000(0)	126.373(5)	0.000(0)	0.000(0)	
55.	265	LAFY		Honda Civic	17.052	5.957
	17.080(4)	17.299(4)	17.191(4)	17.052(4)	0.000(0)	[km/h]
	0.000(0)	124.042(3)	124.208(4)	125.001(4)	0.000(0)	
56.	284	JELÍNEK Jaroslav		Mitsubishi Colt 1300	17.402	6.307
	17.663(6)	17.536(6)	17.530(5)	17.402(5)	17.454(4)	[km/h]
	0.000(0)	190.680(1)	123.485(5)	123.963(5)	122.947(4)	
57.	420	SHELDON		Honda Civic	17.429	6.334
	17.429(5)	17.502(5)	17.566(6)	17.516(6)	0.000(0)	[km/h]
	124.048(3)	0.000(0)	123.287(6)	122.809(6)	0.000(0)	
58.	493	DOMINIK		Mazda 323F	17.739	6.644
	17.895(8)	18.041(8)	17.918(8)	17.885(7)	17.739(5)	[km/h]
	0.000(0)	122.204(5)	121.434(9)	123.314(7)	122.934(6)	
59.	423	RADA Jakub		Nissan primera	17.767	6.672
	17.991(9)	17.845(7)	18.157(9)	17.995(8)	17.767(6)	[km/h]
	120.547(6)	122.406(4)	122.039(8)	123.303(8)	124.348(5)	
60.	492	DAVEE		Honda	18.022	6.927
	18.022(7)	0.000(0)	0.000(0)	0.000(0)	0.000(0)	[km/h]
	120.908(5)	0.000(0)	0.000(0)	0.000(0)	0.000(0)	
61.	125	DRAGON		Škoda Felicia	19.494	8.399
	19.494(4)	19.534(4)	0.000(0)	0.000(0)	0.000(0)	[km/h]
	0.000(0)	107.877(4)	0.000(0)	0.000(0)	0.000(0)	

Přihlášeno 0
Startovalo 0
Klasifikováno 0

Počátek 0 **Kategorie II - speciální vozy**
Konec 0

Poř.	Stč	Jméno	obsah	stroj	Čas	Ztráta
	1. pokus	2. pokus	3. pokus	4. pokus	5. pokus	
1.	403	BOHUSLÁVEK Václav		Cobra 427	11.375	
	11.895(1)	11.375(1)	11.423(1)	11.477(1)	11.459(1)	[km/h]
	0.000(0)	0.000(0)	207.238(1)	206.804(1)	206.552(1)	
2.	494	WERTHEIM Jan		Cobra 427	12.805	1.430
	12.911(2)	12.847(2)	12.910(2)	12.856(2)	12.805(2)	[km/h]
	0.000(0)	0.000(0)	182.502(2)	180.047(2)	180.457(2)	
3.	419	KRUML Petr		Cobra 427	13.036	1.661
	13.756(6)	13.339(4)	13.036(3)	13.336(4)	17.744(8)	[km/h]
	158.800(7)	169.601(3)	175.208(4)	167.393(4)	73.136(8)	
4.	257	TOULA Jiří		Brouk VW	13.145	1.770
	13.532(5)	13.718(6)	13.145(4)	0.000(0)	0.000(0)	[km/h]
	165.543(3)	166.268(5)	163.274(9)	0.000(0)	0.000(0)	
5.	495	WERTHEIM Erik		AC Cobra	13.168	1.793
	13.168(3)	13.391(5)	13.384(6)	13.306(3)	13.382(3)	[km/h]
	162.724(5)	0.000(0)	167.447(6)	167.216(5)	166.836(4)	
6.	59	DVOŘÁK Josef		Fiat Coupé	13.224	1.849
	13.325(4)	13.331(3)	13.224(5)	0.000(0)	0.000(0)	[km/h]
	175.998(1)	173.106(1)	177.363(3)	0.000(0)	0.000(0)	
7.	26	NIKL Jiří		Citroen BX	13.459	2.084
	13.459(1)	13.459(1)	0.000(0)	0.000(0)	0.000(0)	[km/h]
	0.000(0)	165.503(1)	0.000(0)	0.000(0)	0.000(0)	
8.	416	GULF		AC Cobra 424	13.577	2.202
	14.078(8)	13.824(7)	13.660(7)	13.829(5)	13.577(4)	[km/h]
	163.686(4)	168.572(4)	166.801(7)	166.736(6)	166.452(5)	
9.	131	JARDA Pešan Ml.		Š 110 R	13.721	2.346
	14.160(3)	14.035(3)	13.721(1)	13.835(1)	14.736(1)	[km/h]
	0.000(0)	0.000(0)	159.295(2)	160.854(2)	150.147(1)	
10.	113	JAN Bartáček		Seat Ibiza	13.907	2.532
	13.928(7)	14.000(8)	13.907(8)	14.084(6)	13.951(5)	[km/h]
	171.322(2)	171.198(2)	170.709(5)	169.055(3)	170.595(3)	

Poř.	Stč	Jméno	obsah	stroj	Čas	Ztráta
	1. pokus	2. pokus	3. pokus	4. pokus	5. pokus	
11.	106	LADRA Štěpán		Citroen AX	13.941	2.566
	14.013(2)	14.021(2)	14.115(2)	13.941(2)	0.000(0)	
	0.000(0)	161.961(2)	160.811(1)	162.805(1)	0.000(0)	[km/h]
12.	427	WARHOL		Fiat Coupe 16VT	14.111	2.736
	14.193(9)	14.111(9)	14.523(9)	14.864(8)	15.424(7)	
	159.799(6)	164.334(6)	163.818(8)	163.497(7)	155.950(6)	[km/h]
13.	35	ALEŠEK 22		VW Golf	14.439	3.064
	14.439(1)	14.951(1)	0.000(0)	0.000(0)	0.000(0)	
	0.000(0)	174.651(1)	0.000(0)	0.000(0)	0.000(0)	[km/h]
14.	43	MPOWER		BMW	14.518	3.143
	14.518(10)	14.908(10)	0.000(0)	0.000(0)	0.000(0)	
	0.000(0)	0.000(0)	0.000(0)	0.000(0)	0.000(0)	[km/h]
15.	428	DON Pedro		Peugeot 306	14.816	3.441
	15.302(4)	16.785(4)	15.408(3)	14.816(3)	15.807(3)	
	152.030(1)	0.000(0)	151.916(3)	153.367(3)	134.961(3)	[km/h]
16.	253	ŘÍHA Jan		BMW 328	14.854	3.479
	14.933(11)	15.602(12)	15.402(11)	14.854(7)	15.124(6)	
	151.679(8)	0.000(0)	148.794(10)	149.975(8)	149.719(7)	[km/h]
17.	117	SOJKY		BMW 325 Ti	14.975	3.600
	14.975(12)	15.207(11)	15.386(10)	15.297(9)	0.000(0)	
	0.000(0)	0.000(0)	142.031(11)	142.334(9)	0.000(0)	[km/h]
18.	132	JARDA Pešan St.		Š 100	15.339	3.964
	15.339(5)	18.101(5)	15.932(4)	15.587(4)	15.652(2)	
	140.915(2)	105.817(3)	141.867(4)	141.050(4)	142.114(2)	[km/h]
19.	84	AKURAK		Honda Civic	15.459	4.084
	15.459(13)	0.000(0)	0.000(0)	0.000(0)	0.000(0)	
	115.545(9)	0.000(0)	0.000(0)	0.000(0)	0.000(0)	[km/h]
20.	422	PASTRŇÁK Zbyněk		Cobra	16.826	5.451
	17.101(14)	16.826(13)	0.000(0)	0.000(0)	0.000(0)	
	0.000(0)	0.000(0)	0.000(0)	0.000(0)	0.000(0)	[km/h]
21.	447	TOULOVÁ Václava		VW Brouk	20.487	9.112
	20.487(1)	21.034(1)	20.648(1)	0.000(0)	0.000(0)	
	0.000(0)	0.000(0)	100.090(1)	0.000(0)	0.000(0)	[km/h]
22.	418	VAŠÁK Jaroslav		Škoda 100	24.931	13.556
	26.315(3)	25.345(2)	24.931(2)	0.000(0)	0.000(0)	
	82.938(1)	82.528(1)	80.371(2)	0.000(0)	0.000(0)	[km/h]
23.	87	LONGER		Trabant 601 Combi	26.226	14.851
	26.226(2)	26.819(3)	26.495(3)	0.000(0)	0.000(0)	
	77.659(2)	0.000(0)	76.657(3)	0.000(0)	0.000(0)	[km/h]

Přihlášeno 0

Startovalo 0

Klasifikováno 0

Počátek 0

Kategorie TROFEJ

Konec 0

Poř.	Stč	Jméno	obsah	stroj	Čas	Ztráta
	1. pokus	2. pokus	3. pokus	4. pokus	5. pokus	
1.	438	PSYCHO		Suzuki 1000R	10.294	
	10.591(2)	11.236(2)	10.740(2)	10.635(1)	10.294(1)	
	0.000(0)	0.000(0)	204.711(2)	219.405(1)	222.016(1)	[km/h]
2.	430	ČEŠKA Oldřich		Suzuki Hayabusa	10.359	0.065
	10.478(1)	10.406(1)	10.359(1)	0.000(0)	0.000(0)	
	0.000(0)	217.381(1)	215.743(1)	0.000(0)	0.000(0)	[km/h]
3.	429	JERÁBEK Tomáš		Suzuki GSX-R 1000	10.591	0.297
	10.591(1)	11.533(3)	10.667(1)	10.752(2)	10.592(2)	
	0.000(0)	213.042(1)	219.833(1)	217.644(2)	216.375(2)	[km/h]
4.	426	MÁCA		Suzuki GSX-R	10.802	0.508
	10.802(1)	10.863(1)	0.000(0)	0.000(0)	0.000(0)	
	0.000(0)	0.000(0)	0.000(0)	0.000(0)	0.000(0)	[km/h]
5.	346	MIREC		Honda CBR Fireblade	10.991	0.697
	10.991(3)	11.094(1)	11.025(3)	11.156(3)	11.187(3)	
	204.760(1)	202.108(2)	203.329(3)	192.212(3)	203.706(3)	[km/h]
6.	432	PODHORSKÝ Bohumil		Yamaha YZF R6	11.252	0.958
	11.852(1)	11.738(1)	11.252(1)	18.406(4)	11.676(1)	
	193.089(1)	190.690(1)	194.311(1)	78.757(4)	189.388(1)	[km/h]

Poř.	Stč	Jméno	obsah	stroj	Čas	Ztráta
	1. pokus	2. pokus	3. pokus	4. pokus	5. pokus	
7.	445 MATY 12.830(3) 176.073(2)	12.528(2) 0.000(0)	12.371(2) 177.663(2)	12.920(3) 176.776(1)	Suzuki 13.077(3) 174.806(2)	12.371 2.077
8.	490 ČERV 12.471(2) 170.828(3)	12.791(3) 171.334(2)	12.568(3) 171.169(3)	12.579(1) 169.559(2)	Honda CBR 12.550(2) 170.158(3)	12.471 2.177
9.	446 HAMPI 12.920(4) 0.000(0)	12.874(4) 0.000(0)	12.814(4) 154.516(4)	12.916(2) 151.508(3)	Suzuki 13.116(4) 153.511(4)	12.814 2.520
10.	486 ŘEHOŘ Milan 14.492(2) 141.556(1)	14.719(2) 138.625(2)	0.000(0) 0.000(0)	0.000(0) 0.000(0)	Suzuki Intruder 0.000(0) 0.000(0)	14.492 4.198

Přihlášeno 0
Startovalo 0
Klasifikováno 0

Počátek 0 Automobily bez rozdílu
Konec 0

Poř.	Stč	Jméno	obsah	stroj	Čas	Ztráta
	1. pokus	2. pokus	3. pokus	4. pokus	5. pokus	
1.	8 VLASTÍK 11.095(1) 0.000(0)	11.416(1) 0.000(0)	11.222(1) 195.899(1)	11.097(1) 198.864(1)	Nissan GT-R 0.000(0) 0.000(0)	11.095
2.	403 BOHUSLÁVEK Václav 11.895(1) 0.000(0)	11.375(1) 0.000(0)	11.423(1) 207.238(1)	11.477(1) 206.804(1)	Cobra 427 11.459(1) 206.552(1)	11.375 0.280
3.	448 ZED 11.949(2) 197.047(1)	11.967(2) 0.000(0)	12.093(2) 195.349(2)	11.867(2) 198.379(2)	Nissan GTR 12.045(1) 196.418(1)	11.867 0.772
4.	417 KRÍŽ Dan 12.289(3) 192.038(2)	12.589(3) 0.000(0)	21.671(6) 74.846(6)	12.277(3) 190.204(3)	Mercedes Benz CLK 12.226(2) 189.740(2)	12.226 1.131
5.	47 FILOUS Libor 17.812(9) 73.107(7)	12.740(1) 167.998(4)	0.000(0) 0.000(0)	0.000(0) 0.000(0)	Fiat Coupe 0.000(0) 0.000(0)	12.740 1.645
6.	487 LUKAS 12.764(1) 177.863(2)	12.975(2) 176.511(2)	0.000(0) 0.000(0)	0.000(0) 0.000(0)	Audi TTS 0.000(0) 0.000(0)	12.764 1.669
7.	494 WERTHEIM Jan 12.911(2) 0.000(0)	12.847(2) 0.000(0)	12.910(2) 182.502(2)	12.856(2) 180.047(2)	Cobra 427 12.805(2) 180.457(2)	12.805 1.710
8.	374 KUBRA 12.972(3) 173.002(3)	12.997(3) 171.690(3)	12.910(1) 173.692(2)	12.883(1) 174.566(2)	Mitshubishi Evo X 12.877(1) 173.297(1)	12.877 1.782
9.	99 MILOUŠ 12.895(2) 191.941(1)	13.280(4) 191.458(1)	13.658(2) 181.808(1)	13.059(2) 191.176(1)	Ford Sierra Cosworth 16.535(6) 92.968(6)	12.895 1.800
10.	419 KRUML Petr 13.756(6) 158.800(7)	13.339(4) 169.601(3)	13.036(3) 175.208(4)	13.336(4) 167.393(4)	Cobra 427 17.744(8) 73.136(8)	13.036 1.941
11.	480 PÁŘA 13.089(4) 0.000(0)	13.767(4) 0.000(0)	13.064(3) 173.387(3)	14.335(5) 131.115(5)	BMW 335iX 0.000(0) 0.000(0)	13.064 1.969
12.	257 TOULA Jiří 13.532(5) 165.543(3)	13.718(6) 166.268(5)	13.145(4) 163.274(9)	0.000(0) 0.000(0)	Brouk VW 0.000(0) 0.000(0)	13.145 2.050
13.	495 WERTHEIM Erik 13.168(3) 162.724(5)	13.391(5) 0.000(0)	13.384(6) 167.447(6)	13.306(3) 167.216(5)	AC Cobra 13.382(3) 166.836(4)	13.168 2.073
14.	342 HONZA Chipforum 13.173(1) 166.362(1)	13.755(3) 163.074(2)	13.225(1) 165.300(2)	0.000(0) 0.000(0)	Seat Leon 4 0.000(0) 0.000(0)	13.173 2.078
15.	59 DVOŘÁK Josef 13.325(4) 175.998(1)	13.331(3) 173.106(1)	13.224(5) 177.363(3)	0.000(0) 0.000(0)	Fiat Coupé 0.000(0) 0.000(0)	13.224 2.129

Poř.	Stč	Jméno	obsah	stroj	Čas	Ztráta	
	1. pokus	2. pokus	3. pokus	4. pokus	5. pokus		
16.	245	JOHNY			Seat Ibiza	13.314	2.219
	14.470(3)	13.538(2)	13.528(3)	13.314(1)	0.000(0)		
	0.000(0)	317.740(1)	171.940(1)	173.724(1)	0.000(0)	[km/h]	
17.	114	JAN Horák			Opel Kadet	13.388	2.293
	13.388(1)	13.471(1)	0.000(0)	0.000(0)	0.000(0)		
	0.000(0)	171.397(1)	0.000(0)	0.000(0)	0.000(0)	[km/h]	
18.	138	DANDY			Audi A5	13.420	2.325
	13.420(1)	13.563(1)	0.000(0)	0.000(0)	0.000(0)		
	166.063(1)	164.377(1)	0.000(0)	0.000(0)	0.000(0)	[km/h]	
19.	37	DÁDA			Leon Cupra	13.421	2.326
	13.497(2)	13.422(1)	13.489(2)	13.421(2)	0.000(0)		
	160.381(3)	0.000(0)	159.788(3)	160.834(2)	0.000(0)	[km/h]	
20.	26	NIKL Jiří			Citroen BX	13.459	2.364
	13.459(1)	13.459(1)	0.000(0)	0.000(0)	0.000(0)		
	0.000(0)	165.503(1)	0.000(0)	0.000(0)	0.000(0)	[km/h]	
21.	416	GULF			AC Cobra 424	13.577	2.482
	14.078(8)	13.824(7)	13.660(7)	13.829(5)	13.577(4)		
	163.686(4)	168.572(4)	166.801(7)	166.736(6)	166.452(5)	[km/h]	
22.	34	INDI			Audi A4 TDi Q	13.672	2.577
	13.672(2)	13.739(2)	0.000(0)	0.000(0)	0.000(0)		
	0.000(0)	161.016(3)	0.000(0)	0.000(0)	0.000(0)	[km/h]	
23.	131	JARDA Pešan ML.			Š 110 R	13.721	2.626
	14.160(3)	14.035(3)	13.721(1)	13.835(1)	14.736(1)		
	0.000(0)	0.000(0)	159.295(2)	160.854(2)	150.147(1)	[km/h]	
24.	137	LUKYS			BMW 330D	13.731	2.636
	13.806(3)	13.811(3)	13.731(1)	0.000(0)	0.000(0)		
	0.000(0)	0.000(0)	164.235(1)	0.000(0)	0.000(0)	[km/h]	
25.	85	PRCEK			BMW M3	13.784	2.689
	13.784(2)	13.809(2)	0.000(0)	0.000(0)	0.000(0)		
	164.411(1)	0.000(0)	0.000(0)	0.000(0)	0.000(0)	[km/h]	
26.	442	TICTAC			BMW S3Sd	13.812	2.717
	13.941(5)	13.812(4)	14.420(3)	14.133(1)	0.000(0)		
	163.459(2)	162.754(2)	159.112(3)	159.763(1)	0.000(0)	[km/h]	
27.	113	JAN Bartáček			Seat Ibiza	13.907	2.812
	13.928(7)	14.000(8)	13.907(8)	14.084(6)	13.951(5)		
	171.322(2)	171.198(2)	170.709(5)	169.055(3)	170.595(3)	[km/h]	
28.	488	CVACH Tomáš			Fiat Coupe	13.909	2.814
	14.428(5)	14.098(5)	14.098(3)	13.909(3)	14.009(2)		
	0.000(0)	0.000(0)	165.692(3)	167.379(3)	166.180(2)	[km/h]	
29.	3	LUĎA 330d			BMW 330D	13.938	2.843
	13.938(4)	14.150(5)	14.281(2)	0.000(0)	0.000(0)		
	161.382(3)	0.000(0)	160.624(2)	0.000(0)	0.000(0)	[km/h]	
30.	106	LADRA Štěpán			Citroen AX	13.941	2.846
	14.013(2)	14.021(2)	14.115(2)	13.941(2)	0.000(0)		
	0.000(0)	161.961(2)	160.811(1)	162.805(1)	0.000(0)	[km/h]	
31.	10	TOM			BMW X6	13.946	2.851
	13.946(5)	14.000(5)	14.028(4)	0.000(0)	0.000(0)		
	0.000(0)	164.539(2)	164.714(5)	0.000(0)	0.000(0)	[km/h]	
32.	437	PAJ			Chevrolet Camaro	13.954	2.859
	14.043(6)	14.066(6)	14.142(5)	14.278(4)	13.954(3)		
	164.494(3)	166.643(1)	165.304(4)	163.826(4)	165.681(3)	[km/h]	
33.	491	MVOLESKO			Seat Leon Cupra	14.095	3.000
	14.095(4)	0.000(0)	0.000(0)	0.000(0)	0.000(0)		
	0.000(0)	0.000(0)	0.000(0)	0.000(0)	0.000(0)	[km/h]	
34.	82	RADEK 156			Alfa Romeo 156	14.105	3.010
	14.105(1)	14.135(1)	14.105(1)	14.105(1)	14.228(1)		
	166.245(1)	164.833(1)	164.259(1)	164.961(1)	165.465(1)	[km/h]	
35.	427	WARHOL			Fiat Coupe 16VT	14.111	3.016
	14.193(9)	14.111(9)	14.523(9)	14.864(8)	15.424(7)		
	159.799(6)	164.334(6)	163.818(8)	163.497(7)	155.950(6)	[km/h]	
36.	61	MÍŠAN			Honda Civic	14.167	3.072
	14.339(1)	14.285(1)	14.167(1)	14.214(1)	14.441(1)		
	155.842(1)	155.571(1)	156.326(1)	155.839(1)	155.960(1)	[km/h]	
37.	35	ALEŠEK 22			VW Golf	14.439	3.344
	14.439(1)	14.951(1)	0.000(0)	0.000(0)	0.000(0)		
	0.000(0)	174.651(1)	0.000(0)	0.000(0)	0.000(0)	[km/h]	
38.	271	KOUHY			Škoda Octavia TDi	14.490	3.395
	14.654(4)	14.801(4)	14.490(4)	0.000(0)	0.000(0)		
	160.427(2)	158.667(3)	149.529(4)	0.000(0)	0.000(0)	[km/h]	
39.	43	MPOWER			BMW	14.518	3.423
	14.518(10)	14.908(10)	0.000(0)	0.000(0)	0.000(0)		
	0.000(0)	0.000(0)	0.000(0)	0.000(0)	0.000(0)	[km/h]	

Poř.	Stč	Jméno	obsah	stroj	Čas	Ztráta	
	1. pokus	2. pokus	3. pokus	4. pokus	5. pokus		
40.	115	PETKA			Honda CRX	14.613	3.518
	15.089(2)	14.925(2)	14.718(2)	14.675(2)	14.613(2)		
	0.000(0)	148.427(2)	150.960(2)	151.220(2)	152.076(2)	[km/h]	
41.	489	OTA A3			Audi A3	14.770	3.675
	15.229(6)	14.858(5)	14.770(5)	0.000(0)	0.000(0)		
	151.644(4)	0.000(0)	148.752(5)	0.000(0)	0.000(0)	[km/h]	
42.	428	DON Pedro			Peugeot 306	14.816	3.721
	15.302(4)	16.785(4)	15.408(3)	14.816(3)	15.807(3)		
	152.030(1)	0.000(0)	151.916(3)	153.367(3)	134.961(3)	[km/h]	
43.	259	MĚSÍC			VW Golf V GTi	14.835	3.740
	15.202(6)	14.971(6)	15.050(4)	14.835(4)	14.849(3)		
	149.493(4)	149.786(5)	147.924(4)	151.016(4)	151.211(3)	[km/h]	
44.	253	ŘÍHA Jan			BMW 328	14.854	3.759
	14.933(11)	15.602(12)	15.402(11)	14.854(7)	15.124(6)		
	151.679(8)	0.000(0)	148.794(10)	149.975(8)	149.719(7)	[km/h]	
45.	117	SOJKY			BMW 325 Ti	14.975	3.880
	14.975(12)	15.207(11)	15.386(10)	15.297(9)	0.000(0)		
	0.000(0)	0.000(0)	142.031(11)	142.334(9)	0.000(0)	[km/h]	
46.	105	MCLAUDI			Peugeot ZC5 GTI	15.074	3.979
	15.170(1)	15.074(1)	15.199(1)	2:52.929(9)	15.499(2)		
	149.128(1)	0.000(0)	145.706(1)	69.336(9)	145.759(1)	[km/h]	
47.	424	VORY			Seat Ibiza	15.136	4.041
	15.136(5)	15.212(6)	15.144(6)	0.000(0)	0.000(0)		
	0.000(0)	0.000(0)	148.296(6)	0.000(0)	0.000(0)	[km/h]	
48.	96	PARY			Nissan Sunny	15.227	4.132
	15.259(2)	15.386(2)	15.227(2)	15.288(1)	15.316(1)		
	143.974(2)	0.000(0)	144.304(2)	144.376(1)	143.692(2)	[km/h]	
49.	431	LUCIE			BMW	15.274	4.179
	16.194(6)	15.536(6)	15.274(4)	15.862(2)	15.966(1)		
	138.945(4)	0.000(0)	146.103(4)	137.478(2)	145.551(1)	[km/h]	
50.	225	HARRY			BMW 323Ti	15.321	4.226
	15.321(1)	15.662(1)	15.718(1)	15.792(1)	0.000(0)		
	147.126(1)	0.000(0)	143.949(1)	144.972(1)	0.000(0)	[km/h]	
51.	132	JARDA Pešan St.			Š 100	15.339	4.244
	15.339(5)	18.101(5)	15.932(4)	15.587(4)	15.652(2)		
	140.915(2)	105.817(3)	141.867(4)	141.050(4)	142.114(2)	[km/h]	
52.	217	MATOUŠ Jindřich St.			Saab Aero	15.352	4.257
	15.631(1)	15.352(1)	15.999(1)	15.934(1)	16.215(1)		
	147.391(1)	0.000(0)	142.987(1)	142.765(1)	143.794(1)	[km/h]	
53.	44	DREXLER Tomáš			Škoda Favorit	15.390	4.295
	15.900(1)	15.538(1)	15.956(1)	15.417(1)	15.390(1)		
	131.025(2)	137.471(2)	137.665(1)	138.206(1)	138.787(1)	[km/h]	
54.	129	FÍLA			Honda Civic	15.403	4.308
	15.423(3)	15.485(3)	15.403(3)	15.978(3)	0.000(0)		
	143.596(2)	141.419(3)	143.392(3)	110.953(3)	0.000(0)	[km/h]	
55.	84	AKURAK			Honda Civic	15.459	4.364
	15.459(13)	0.000(0)	0.000(0)	0.000(0)	0.000(0)		
	115.545(9)	0.000(0)	0.000(0)	0.000(0)	0.000(0)	[km/h]	
56.	436	VONDRI			VW Golf TDi GTi	15.579	4.484
	15.579(7)	15.632(7)	15.668(7)	15.784(3)	0.000(0)		
	145.760(5)	144.926(4)	144.087(7)	144.330(3)	0.000(0)	[km/h]	
57.	112	VLASTIMIL Bůžek			Opel Vectra	15.709	4.614
	15.990(3)	15.988(3)	15.709(3)	15.788(2)	19.324(7)		
	0.000(0)	139.229(1)	139.808(3)	140.527(2)	80.360(7)	[km/h]	
	421	STRAČENA			Škoda Octavia	15.709	4.614
	15.826(7)	15.842(7)	16.195(5)	16.232(6)	15.709(4)		
	147.880(5)	0.000(0)	145.436(5)	137.911(6)	144.867(4)	[km/h]	
59.	254	PELEŠKA Zdeněk			BMW 325 TDS	15.812	4.717
	16.184(2)	15.864(2)	15.819(2)	15.812(2)	15.960(2)		
	138.524(2)	139.190(2)	139.837(2)	140.152(2)	139.047(2)	[km/h]	
60.	433	BLUR			Honda	15.899	4.804
	15.899(2)	16.093(2)	15.943(2)	0.000(0)	0.000(0)		
	138.929(2)	0.000(0)	137.936(2)	0.000(0)	0.000(0)	[km/h]	
61.	98	OPEČKO Jiří			Ford Probe	15.945	4.850
	15.945(3)	16.113(3)	16.117(3)	0.000(0)	0.000(0)		
	138.230(3)	0.000(0)	136.827(3)	0.000(0)	0.000(0)	[km/h]	
62.	435	KUBA			Opel Zafira	16.135	5.040
	16.379(8)	16.264(8)	16.242(6)	16.213(5)	16.135(5)		
	133.758(6)	0.000(0)	135.581(6)	139.293(5)	137.677(5)	[km/h]	
63.	203	MEFISTO			Alfa Romeo	16.161	5.066
	16.331(3)	16.257(3)	16.816(3)	16.161(3)	0.000(0)		
	136.237(3)	136.092(3)	135.455(3)	136.522(3)	0.000(0)	[km/h]	

Poř.	Stč	Jméno	obsah	stroj	Čas	Ztráta	
	1. pokus	2. pokus	3. pokus	4. pokus	5. pokus		
64.	111	ČÍŽEK Pavel			Alfa Romeo 147	16.275	5.180
	16.416(5)	16.395(4)	16.347(4)	16.275(3)	0.000(0)		
	0.000(0)	0.000(0)	136.212(5)	136.745(4)	0.000(0)	[km/h]	
65.	434	REPRO			Honda Civic	16.366	5.271
	16.366(4)	16.519(5)	16.430(5)	16.416(4)	17.108(4)		
	136.880(3)	134.749(3)	135.714(6)	135.408(5)	132.199(4)	[km/h]	
66.	440	PUNKERKA 89			Honda	16.424	5.329
	16.800(3)	16.957(3)	16.424(2)	16.912(3)	16.443(2)		
	122.166(4)	120.449(4)	135.344(2)	132.108(3)	134.682(2)	[km/h]	
67.	425	VINL			Peugeot 205	16.470	5.375
	16.528(8)	16.483(8)	16.575(8)	16.470(4)	16.642(1)		
	132.921(6)	130.916(5)	130.535(8)	130.315(4)	128.128(1)	[km/h]	
68.	444	DISEASE			Ford Probe	16.479	5.384
	16.479(4)	16.555(4)	16.651(4)	17.099(2)	17.072(1)		
	136.053(4)	135.379(1)	134.981(4)	134.812(2)	131.752(1)	[km/h]	
69.	216	PEDROLUX			Citroen Xsara VTS	16.593	5.498
	17.054(7)	16.711(6)	16.998(7)	16.822(6)	16.593(3)		
	135.548(4)	135.131(2)	137.153(4)	137.112(3)	139.118(3)	[km/h]	
70.	439	GOLFI			Honda Civic	16.642	5.547
	16.748(2)	16.724(2)	16.771(3)	16.877(2)	16.642(3)		
	132.830(1)	0.000(0)	132.048(3)	132.130(2)	133.126(3)	[km/h]	
71.	443	KRÁCA			BMW	16.682	5.587
	16.698(6)	18.458(9)	16.994(6)	16.682(5)	0.000(0)		
	133.230(5)	0.000(0)	129.299(7)	133.876(6)	0.000(0)	[km/h]	
72.	422	PASTRŇÁK Zbyněk			Cobra	16.826	5.731
	17.101(14)	16.826(13)	0.000(0)	0.000(0)	0.000(0)		
	0.000(0)	0.000(0)	0.000(0)	0.000(0)	0.000(0)	[km/h]	
73.	286	MELOUNEK			Opel Monza	16.978	5.883
	17.162(3)	16.978(3)	17.097(1)	17.039(1)	17.182(1)		
	0.000(0)	0.000(0)	126.852(1)	122.209(1)	121.577(1)	[km/h]	
74.	441	EFFKO			VW Golf	17.038	5.943
	17.081(5)	17.038(5)	17.176(5)	0.000(0)	0.000(0)		
	0.000(0)	0.000(0)	126.373(5)	0.000(0)	0.000(0)	[km/h]	
75.	265	LAFY			Honda Civic	17.052	5.957
	17.080(4)	17.299(4)	17.191(4)	17.052(4)	0.000(0)		
	0.000(0)	124.042(3)	124.208(4)	125.001(4)	0.000(0)	[km/h]	
76.	284	JELÍNEK Jaroslav			Mitsubishi Colt 1300	17.402	6.307
	17.663(6)	17.536(6)	17.530(5)	17.402(5)	17.454(4)		
	0.000(0)	190.680(1)	123.485(5)	123.963(5)	122.947(4)	[km/h]	
77.	420	SHELDON			Honda Civic	17.429	6.334
	17.429(5)	17.502(5)	17.566(6)	17.516(6)	0.000(0)		
	124.048(3)	0.000(0)	123.287(6)	122.809(6)	0.000(0)	[km/h]	
78.	493	DOMINIK			Mazda 323F	17.739	6.644
	17.895(8)	18.041(8)	17.918(8)	17.885(7)	17.739(5)		
	0.000(0)	122.204(5)	121.434(9)	123.314(7)	122.934(6)	[km/h]	
79.	423	RADA Jakub			Nissan primera	17.767	6.672
	17.991(9)	17.845(7)	18.157(9)	17.995(8)	17.767(6)		
	120.547(6)	122.406(4)	122.039(8)	123.303(8)	124.348(5)	[km/h]	
80.	492	DAVEE			Honda	18.022	6.927
	18.022(7)	0.000(0)	0.000(0)	0.000(0)	0.000(0)		
	120.908(5)	0.000(0)	0.000(0)	0.000(0)	0.000(0)	[km/h]	
81.	125	DRAGON			Škoda Felicia	19.494	8.399
	19.494(4)	19.534(4)	0.000(0)	0.000(0)	0.000(0)		
	0.000(0)	107.877(4)	0.000(0)	0.000(0)	0.000(0)	[km/h]	
82.	447	TOULOVÁ Václava			VW Brouk	20.487	9.392
	20.487(1)	21.034(1)	20.648(1)	0.000(0)	0.000(0)		
	0.000(0)	0.000(0)	100.090(1)	0.000(0)	0.000(0)	[km/h]	
83.	418	VAŠÁK Jaroslav			Škoda 100	24.931	13.836
	26.315(3)	25.345(2)	24.931(2)	0.000(0)	0.000(0)		
	82.938(1)	82.528(1)	80.371(2)	0.000(0)	0.000(0)	[km/h]	
84.	87	LONGER			Trabant 601 Combi	26.226	15.131
	26.226(2)	26.819(3)	26.495(3)	0.000(0)	0.000(0)		
	77.659(2)	0.000(0)	76.657(3)	0.000(0)	0.000(0)	[km/h]	

Přihlášeno 0
Startovalo 0
Klasifikováno 0

Libor Houšť
ředitel závodu